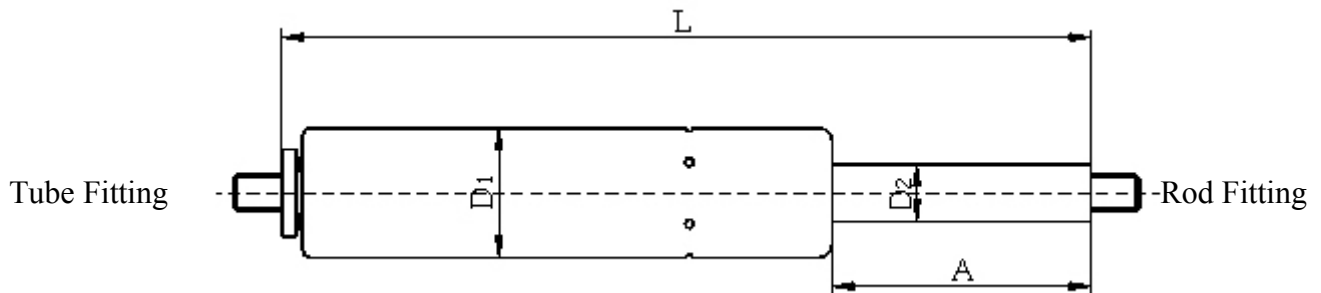


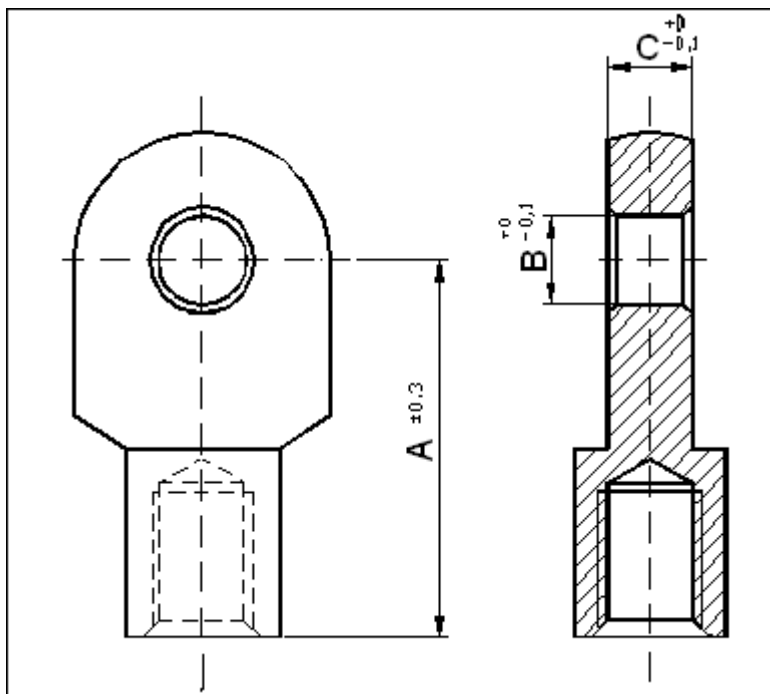
# Standard gas spring



L	:	Open Length
A	:	Stroke
D 2	:	Piston rod diameter
D 1	:	Tube diameter
F	:	Force (F 1)

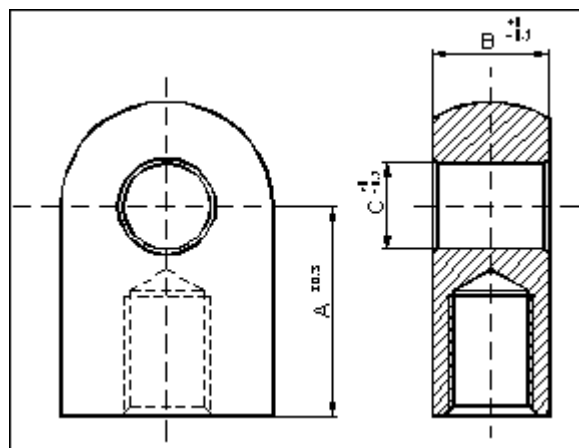
TYPE		L		A		F	
D1	D2	Min.	Max.	Min.	Max.	Min.	Max.
15	06	90	400	20	150	10 N	350 N
18	08	100	700	25	300	50 N	700 N
22	10	150	900	40	400	100 N	1200 N
27	14	250	1500	50	700	250 N	1500 N
28	14	300	1500	50	700	1000 N	2500 N





Cod 1101

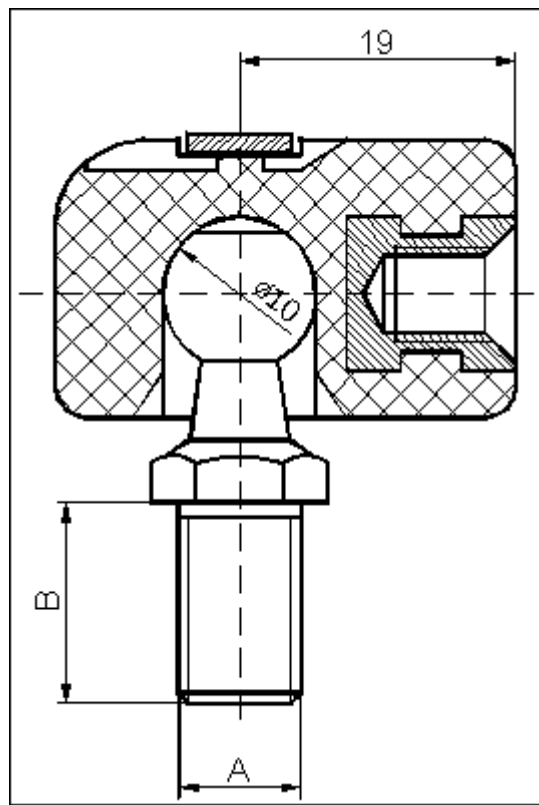
A	B	C	A	B	C	A	B	C	A	B	C	A	B	C
18	6,2	5	20	6,2	5	22	6,2	5	25	6,2	5	28	6,2	5
18	6,2	10	20	6,2	10	22	6,2	10	25	6,2	10	28	6,2	10
18	8,2	5	20	8,2	5	22	8,2	5	25	8,2	5	28	8,2	5
18	8,2	10	20	8,2	10	22	8,2	10	25	8,2	10	28	8,2	10
						22	10,2	5	25	10,2	5	28	10,2	5
						22	10,2	10	25	10,2	10	28	10,2	10



Cod 1102

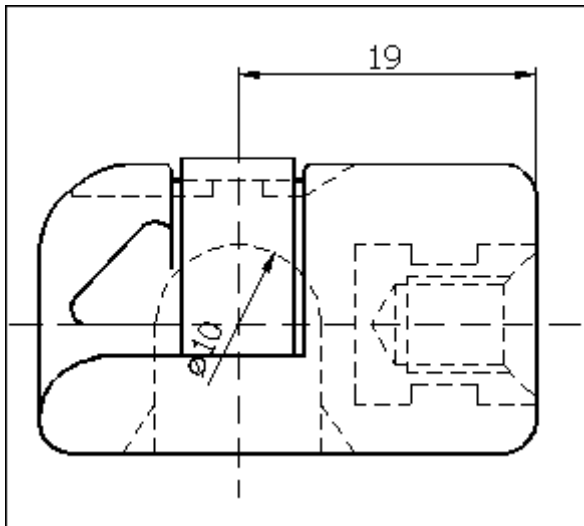
A	B	C	A	B	C	A	B	C
15	6,2	8	18	6,2	8	20	6,2	8
15	6,2	10	18	6,2	10	20	6,2	10
15	6,2	12	18	6,2	12	20	6,2	12
15	8,2	8	18	8,2	8	20	8,2	8
15	8,2	10	18	8,2	10	20	8,2	10
15	8,2	12	18	8,2	12	20	8,2	12
15	10,2	8	18	10,2	8	20	10,2	8
15	10,2	10	18	10,2	10	20	10,2	10
15	10,2	12	18	10,2	12	20	10,2	12



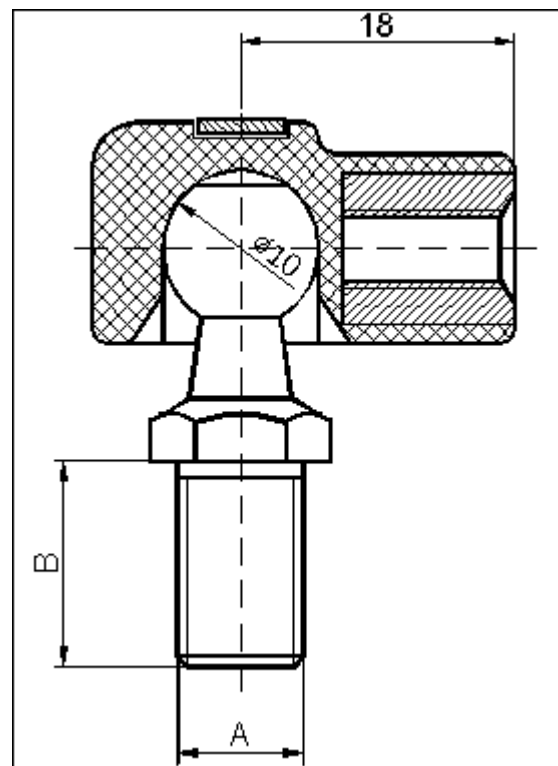


Cod 1105

A	B
M5	10
M6	11
M8	13

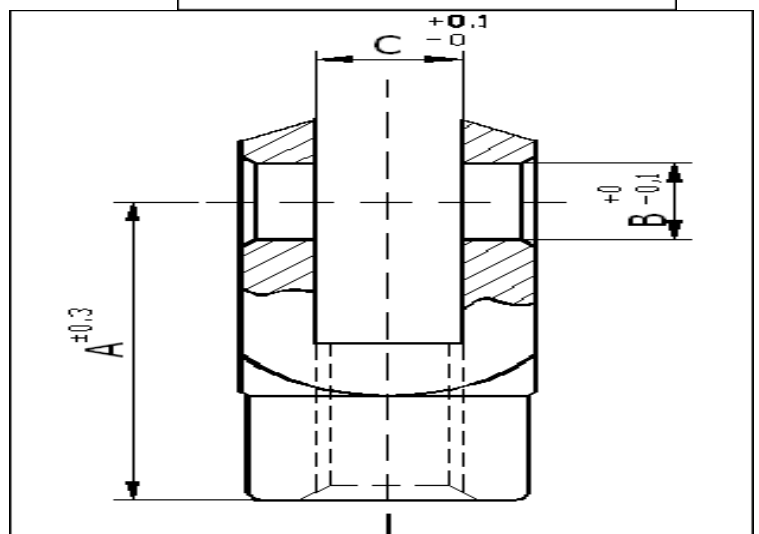
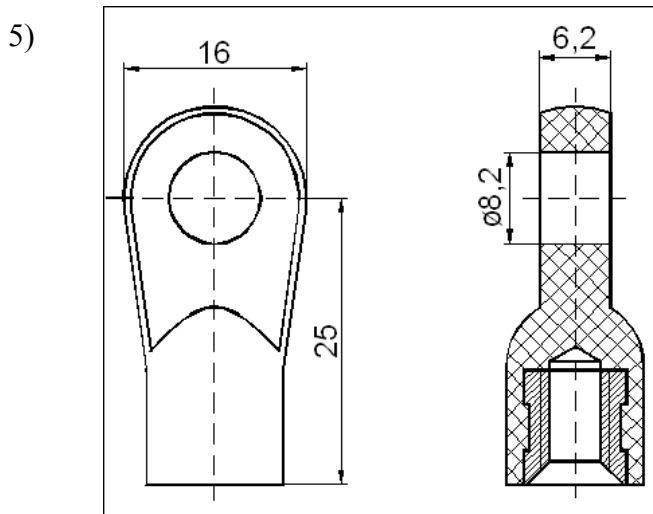
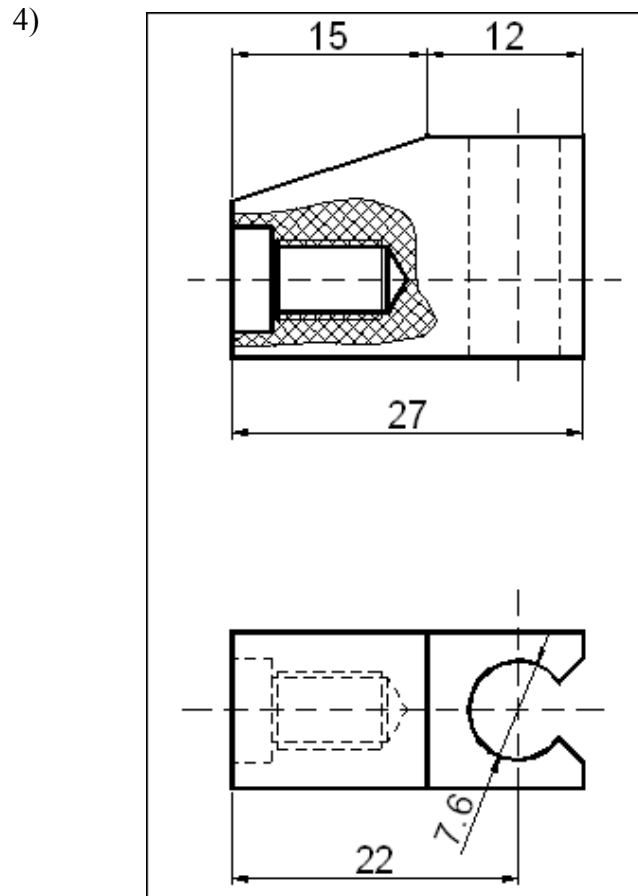
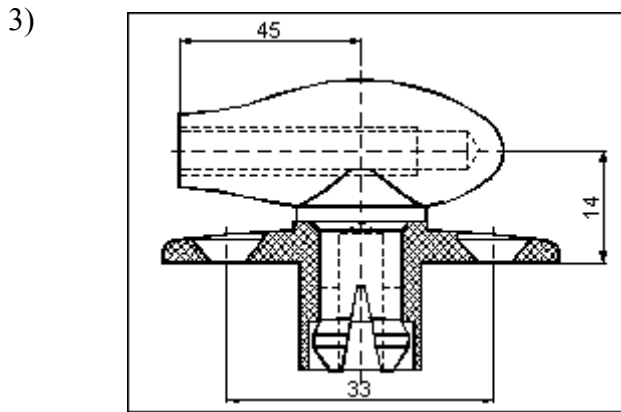
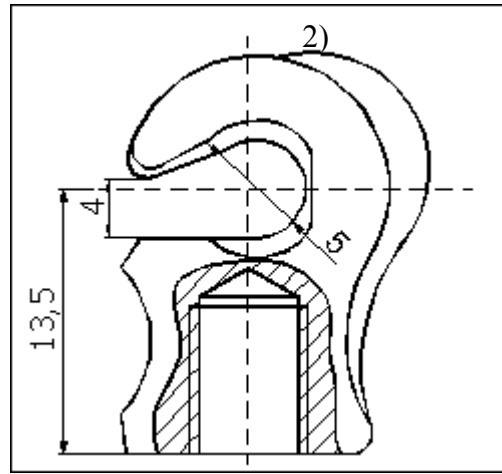
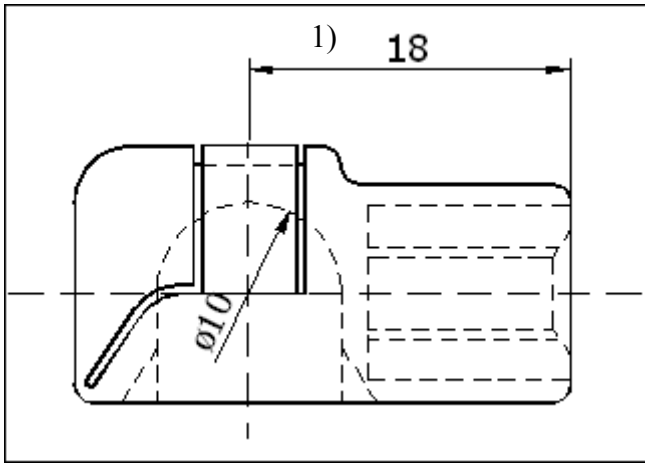


Cod 1106



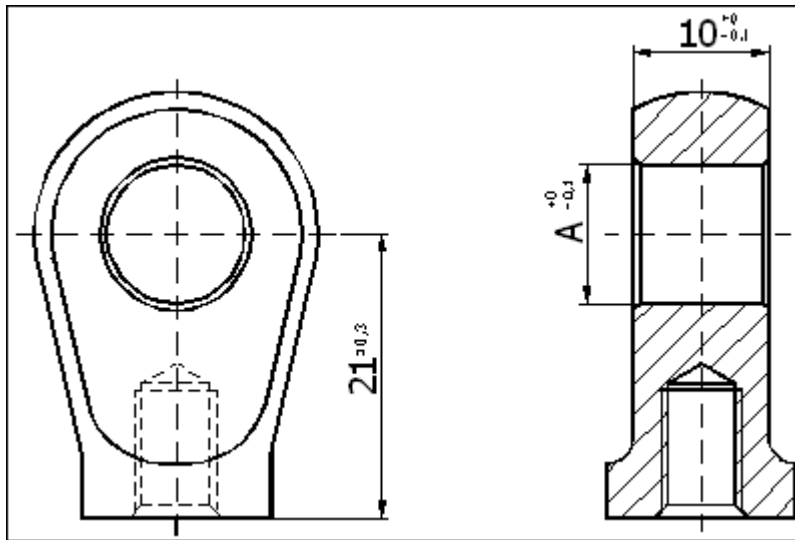
Cod 1107

A	B
M5	10
M6	11
M8	13



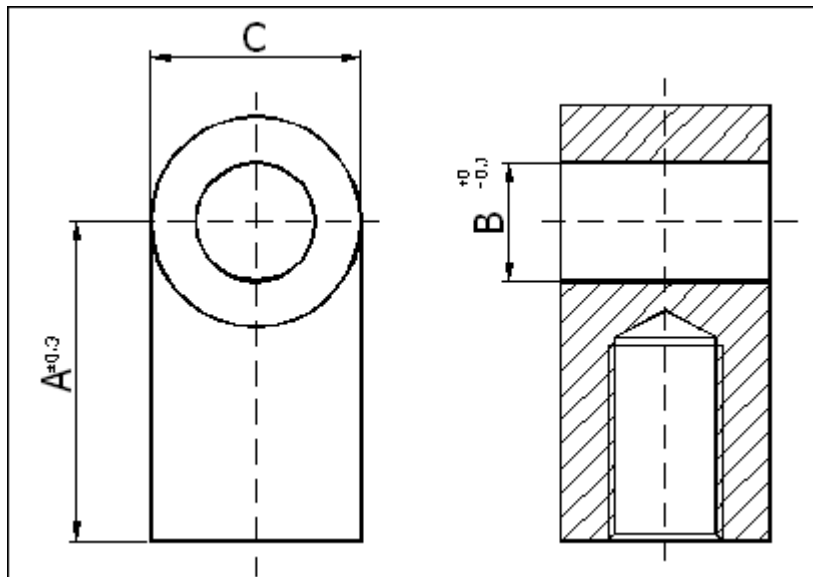
Cod 1108 ( 1/ 2/ 3/ 4/ 5)

A	B	C	A	B	C	A	B	C	A	B	C	A	B	C
20	5,2	5	22	6,2	6	32	6,2	8	40	8,2	10	60	10,2	10
						32	8,2	8	40	10,2	10			



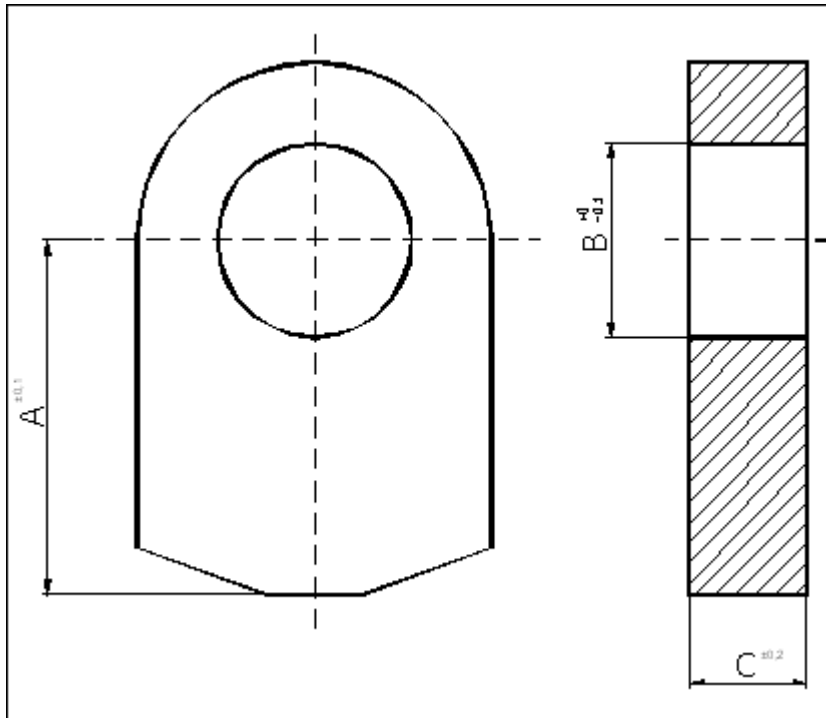
Cod 1109

A	
	6,2
	8,2
	10,2



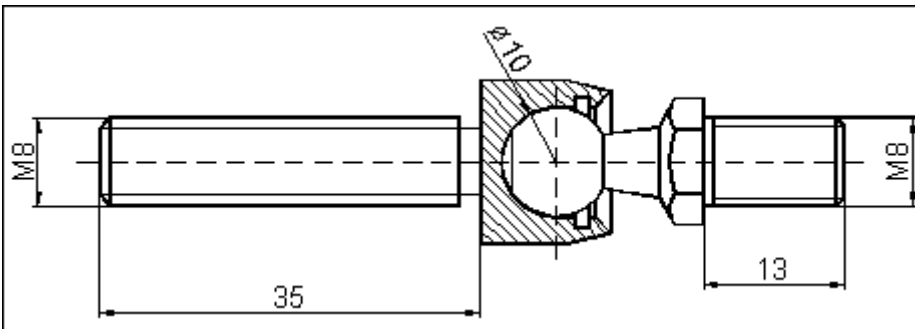
Cod 1110

A	B	C		A	B	C
22	8,2	15,4		25	8,2	18
				25	8,5	18
				25	10,2	18

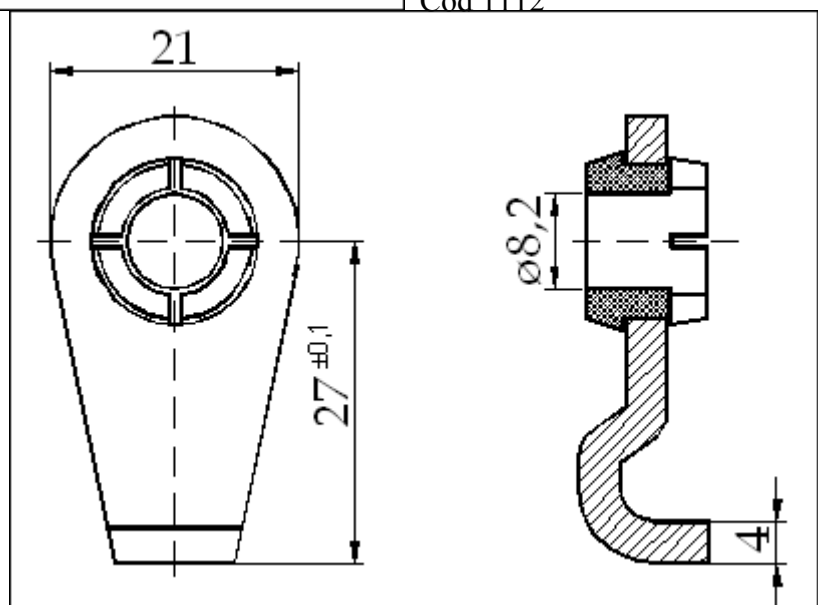


Cod 1111

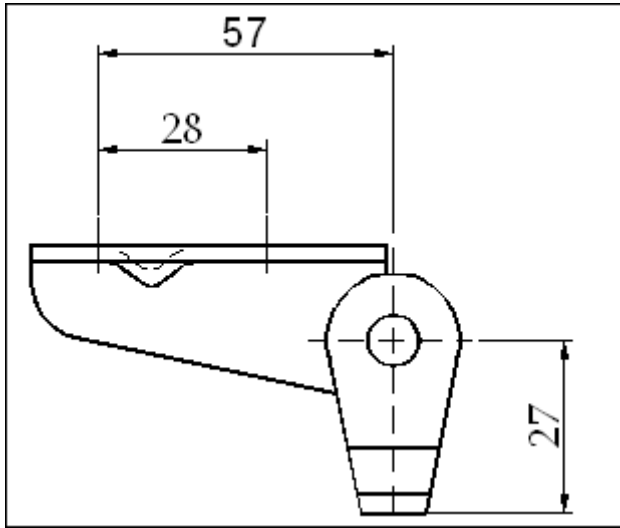
A	B	C	A	B	C	A	B	C
13	6,2	3	15	6,2	5	20	6,2	5
13	8,2	3	15	8,2	5	20	8,2	5
			15	8,5	5	20	8,5	5
			15	10,2	5	20	10,2	5



Cod 1112

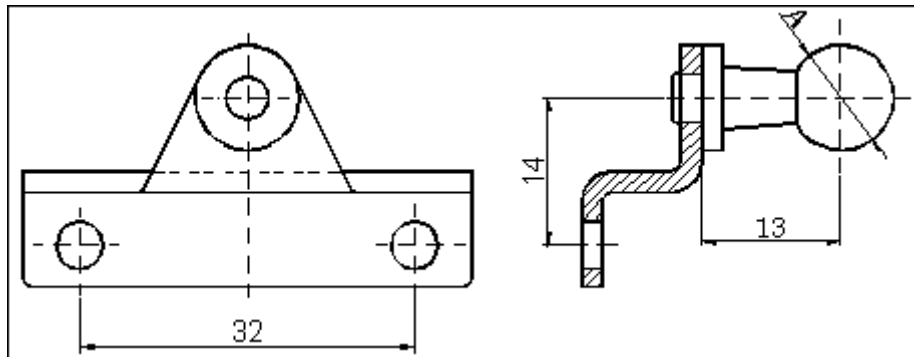
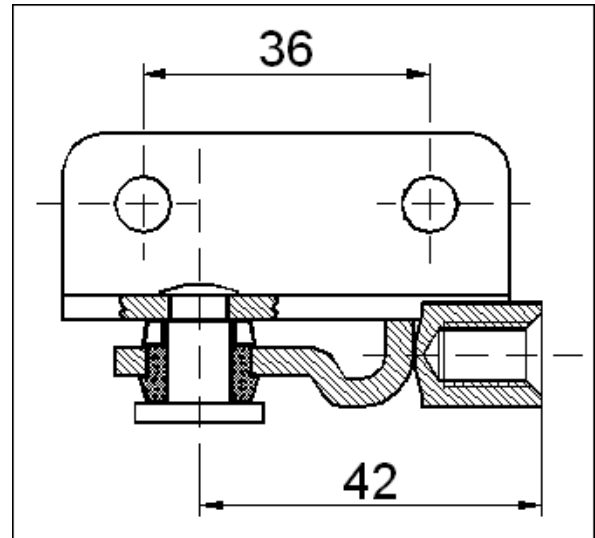


Cod 1113



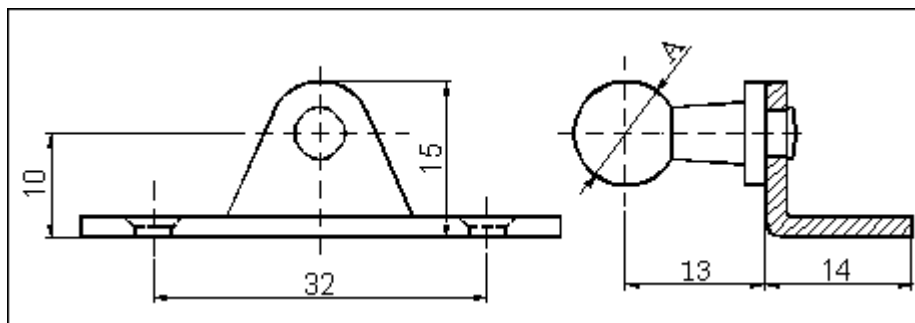
Cod 1115

Cod 1114



Cod 1116

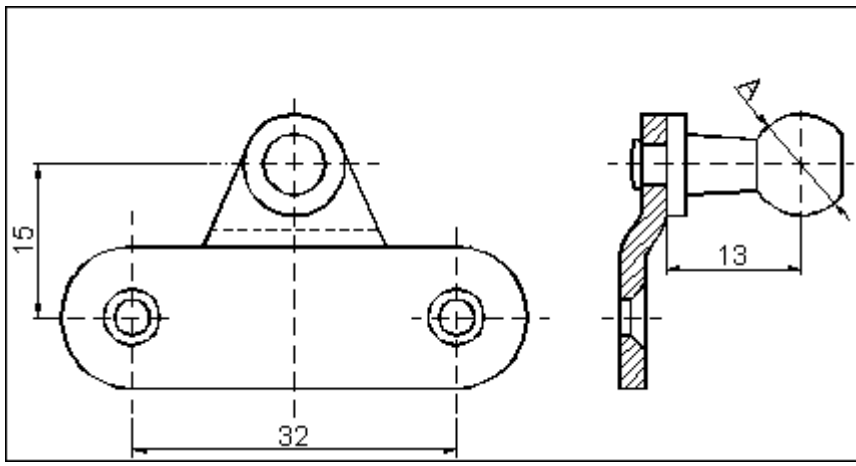
A
8
10



Cod 1117

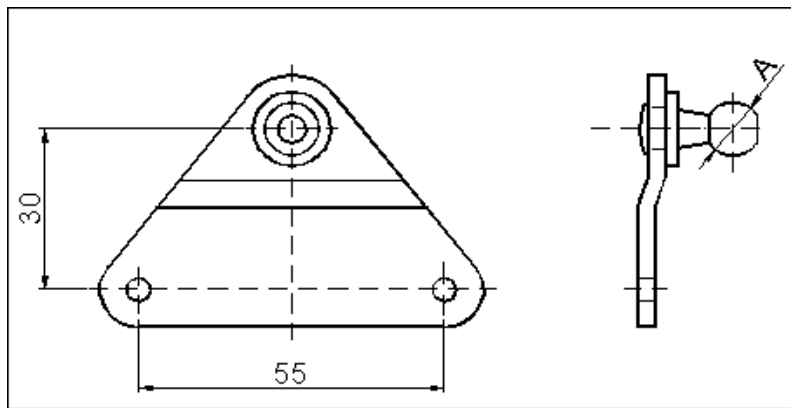
A
8
10





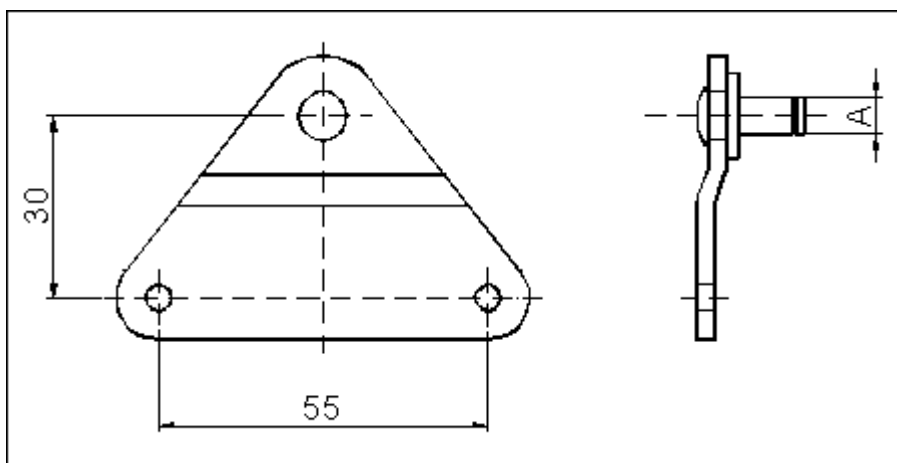
Cod 1118

A
8
10



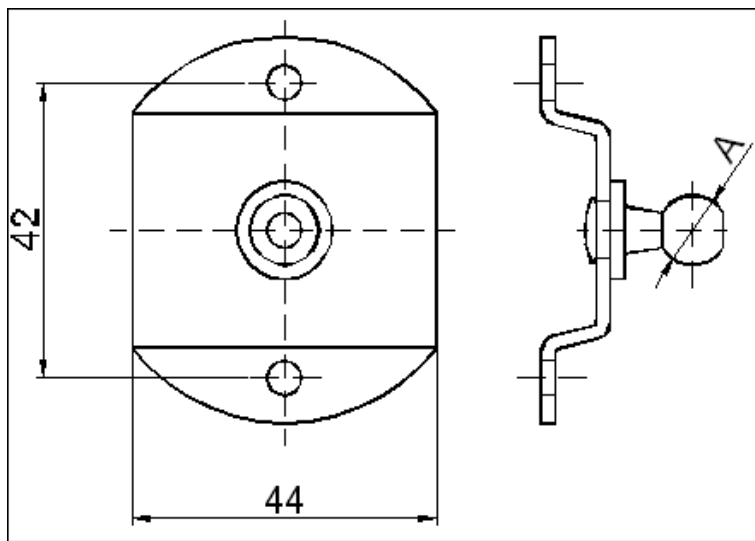
Cod 1119

A
8
10



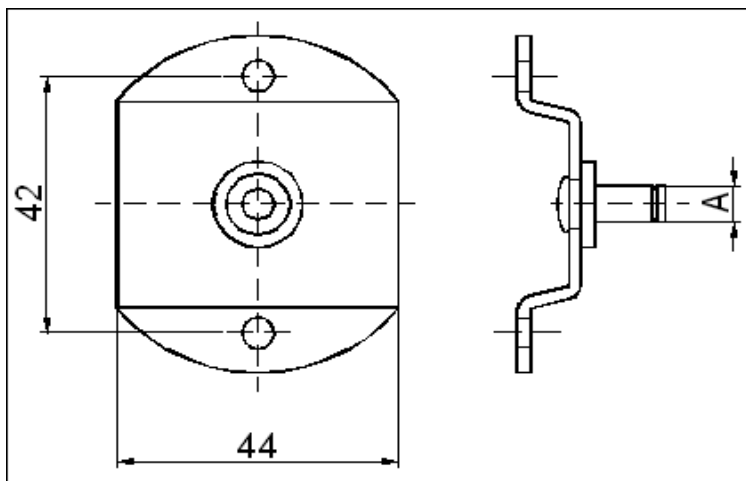
Cod 1120

A
6
8



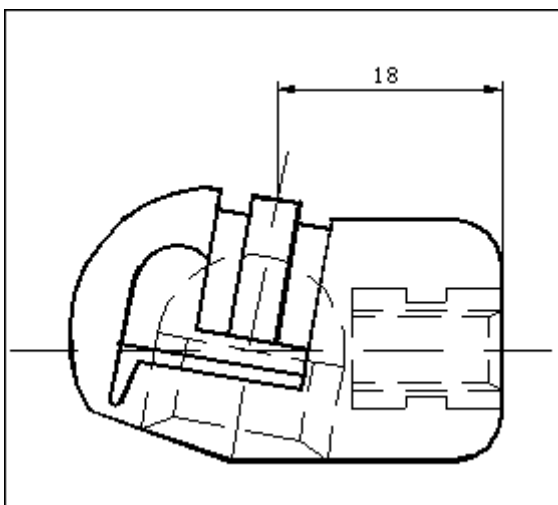
Cod 1121

A
8
10

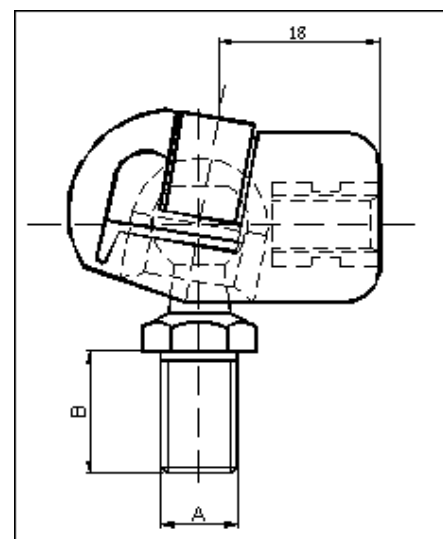


Cod 1122

A
6
8



Cod 1123



A	B
M5	10
M6	11
M8	13